

La Epístola

Winter 2017 / Vol 48, No 1

An Unprecedented 150th Celebration

from the 150th Task Force

It was an unprecedented event.

Three national leaders of the Presbyterian Church and a couple handfuls of regional leaders all converged on Santa Fe to join in the observance and celebration of the 150th anniversary of First Presbyterian Church.

The church is the oldest continuing Protestant congregation in New Mexico and Arizona (New Mexico Territory before statehood). Although Baptists had attempted to establish a church earlier, the effort had been abandoned and the ruins of the old adobe church building were purchased by the Presbyterians on the site where the current building stands.

It was in 1866 that a letter went to the mission board of the Presbyterian Church from the wife of the governor of the territory requesting that a minister be sent. At the end of November that year, the Rev. David McFarland stepped off the stage and a couple days later led the first worship service in the Council Chamber of

the Palace of the Governors. On January 6, 1867, the church was formally organized in the same Council Chamber.

National leaders in Santa Fe for the mid-January celebration were the Rev. Jan Edmiston, co-moderator of the 222nd General Assembly—the highest elective office in the Church; Tony De La Rosa, interim executive director of the General Assembly Mission Agency which oversees and coordinates work of the Church throughout the world; Carol Winkler, national moderator of the Presbyterian Women organization.

Regional leaders present included Bill McConnell, regional Mission Engagement Advisor; Conrad Rocha, executive of the Synod of the Southwest (Arizona and New Mexico); Maribeth Culpepper, moderator of the Synod of the Southwest; Lorelei Kay, moderator of the Presbytery of Santa Fe (regional governing body for 3/5 of New Mexico); Stephen Rhoades, stated clerk of the Presbytery of Santa Fe.

Also present Saturday evening at the banquet was Javier Gonzales, mayor of Santa Fe, who praised the church for its long history of being involved in the community and making a better place to live for all.

It is unprecedented that such a gathering of religious leaders of the Church would gather to join in celebrating the anniversary of a congregation. It speaks to the importance the Santa Fe congregation has played in the whole development of a massive mission effort in the Southwest.

It all started in Santa Fe with the Rev. David McFarland beginning a school for children in his home within a few days of arriving. Presbyterian women in Auburn, New York, became interested in this educational effort in Santa Fe and raised money to send the first teacher, Charity Gaston. Their interest in the needs of the Southwest rapidly spread to other women's groups and the Presbyterian Women organization came into being for the

continued on page 3



FIRST PRESBYTERIAN CHURCH
of Santa Fe

Behold. Be still. Become.

208 Grant Avenue
Santa Fe, NM 87501
505.982.8544
fpcsantafe.org

Pastor

Rev. Dr. Harry Eberts III

Session

Bruce Black
Rie Clark
Patricia Copple
Bill Eklund
Sharon Eklund
Judi Haines
Steve Kinnett
Richard Lindahl
Margaret Lyerly
Jim Martin
Dennis Sanderson
Jenny Vellinga
Gale Wright

Deacons

Mary Black
Darryl Bowman
Adrienne Ewing-Meyer
Art Hansen
Kathy Hansen
Gay Hill
Arlena Jackson
Dorothy Karayanis
Paul Kincaid
Keith Kirby
Sharon Kirby
Karin Lerew
Rose Mott
Tom Mott
Patti Poitras
Alice Tinkle
Djohariah Toor
M'Lea Walsh
W Grant Wright
Madeleine Wright

Communications Committee Chair

Mary Neff

Newsletter Coordinator

Jenny Vellinga

Dear Theophilus,

My, what a celebration! 150 years are a lot of reasons to celebrate. Many thanks to the multitude of people who helped make it one of the biggest weekends this church has seen in years.

How appropriate, then, that our 150th anniversary coincides with our Year of Renewal, the fourth and final movement in our four-year Spiritual Direction journey. Renewal is a fine word though prone to overuse and fuzzy definitions. The birth of Christ is the perfect time to think renewal but the Christmas story in Matthew cautions us that it's not all joyful, angelic songs and silent, starry nights.

Renewal is about dreams, and not always pleasant ones. Joseph received a dream with an urgent message that Herod was out to kill Jesus. Leave for Egypt, a place outside of his reach, and find a safe place. Renewal begins more in dark times than joyful ones, as we face deep challenges and numbing fears. It is finding our way to Egypt.

Renewal comes when we remember Scripture. Matthew remembered Exodus as he recounted the birth story, tying in all the elements of Moses with the story of Jesus. Give it a try. Relate your life to scripture stories and see how enriching and life-giving it is to be connected. Renewal looks like that.

In a second dream Joseph was told to go back home, the threat was gone, Herod had died. Right when we think renewal is about coming back home again Matthew's story makes a quick detour, Herod's son is worse than his father, and they are in danger again. Renewal is not about going home again, as hard as that is to hear.

The family quickly head to Nazareth, a God-forsaken town in a far off, an "are you kidding?" kind of place. Renewal is not where we think we should end up, not always the place of our dreams, as much as it is digging in to where we are, the here and now, however hard-scrabble it might be, like Santa Fe was years ago. It is on this fertile ground, the very place we are standing, where renewal takes birth. It is in Nazareth that Jesus grew in wisdom and in stature, far from any madding crowd. Renewal needs a Nazareth to be nurtured and held.

Finally, renewal asks us to dream our own dreams. What will they be? What will our next 150 years look like? Who will we become? Matthew's story of Jesus' birth gives us clues on our own rebirth and renewal. I look forward to seeing what it will look like.

Pastor Harry Eberts

150th Celebration

continued from page 1

purpose of supporting Presbyterian work, particularly in the Southwest.

The Presbyterian Women organization continues today and continues to be a vital support group for Presbyterian work around the world. Carol Winkler who was here to make a presentation is the current moderator (president) of the organization.

Presbyterian work in the Southwest which grew from the seed planted in Santa Fe included:

- Some 50 mission day schools in Northern New Mexico, Allison James mission boarding school in Santa Fe, and Menaul boarding school in Albuquerque. All but Menaul have been closed as public education came into the areas;
- Embudo Hospital in Dixon and its clinics in Peñasco, Truchas, and

San Luis, Colorado; Mora Valley Clinic in Cleveland, New Mexico; and Ganado Hospital and training school in Ganado, Arizona. Some are now closed, others are under the auspices of other entities.

Tony De La Rosa was the keynote speaker at the festive celebration banquet at the historic downtown La Fonda, and the Rev. Jan Edmiston delivered the sermon at the Sunday worship service which filled the church to capacity. Other events included a time for former pastors to reflect on their experiences in Santa Fe, and leaders participated in a Sunday morning forum to express their perceptions of the challenges and opportunities for the church in the 21st Century.

Chair of the 150th Anniversary Task Force is Marjorie Lunderville. A version of this story appeared in the Presbyterian News Service: <https://www.presbyterianmission.org/story/new-mexico-presbyterian-church-celebrates-150-years-mission/>.

And the Celebrations Continue

Women's Lunch on Saturday, May 6 at 11:30: This will honor the "church ladies" of the past and remember some of the great work they did along with some of the humorous "musts" and "must-nots" expected of us along the way. We plan to have tables set with china representing the time line since 1867. We'll ask you to bring a plate or two that you have. They will be used for display on the tables but the food will be served on our church glass plates. If you have pictures, such as from Easter, of folks dressed for church over the years we'd love that too. The main dish will be catered but remembering church ladies serving food over the years we will ask for "potluck" contributions of salads and desserts, especially any representing fads from different eras. Mary Ann Lundy will update us on more recent history and current happenings for church women. Watch for more information about this event and mark your calendars now to save the date for what we plan to be a happy intergenerational event.

Fairview Cemetery Presentation and Tour

on Sunday, May 21: David Mason will give a PowerPoint presentation during the Adult Education hour on the significance of the historical Fairview Cemetery and later a guided tour of the cemetery.



Among our special guests for the celebration were all but one of the grandchildren of the Rev. William Hayes Moore, pastor of the church from 1897 to 1904. Seated are Merlin and Ada Randall (ruling elder), Joanne and Bill Kersting (ruling elder), and Chris (teaching elder) and Beckie Kersting. Standing are Ray (teaching elder) and Betty Kersting.

Worship & Music

Chancel Choir News

A Service of Darkness for Good Friday

The Chancel Choir will commemorate Good Friday with a composition by Dale Wood entitled *A Service for Darkness: Jesus' Death Upon the Cross*. In seven sections that correspond to the traditional Seven Last Words of Christ, the composition uses poetry from writers of the 13th and 19th centuries. Dale Wood (1934–2003) was born to Finnish-Polish parents with the last name of Wojtkiewicz that was shortened by the immigration authorities to Wood. He spent most of his life in California and was known worldwide as a distinguished composer, editor, author, organist and conductor. This piece gives a unique voice to statements of Jesus pulled together from Matthew, Luke and John and a beautiful environment to contemplate this profound holy mystery of the Christian tradition.



As part of the 150th celebration weekend, the Chancel Choir performed church member Linda Rice Beck's Requiem for a large crowd.

Spotlight on New Choir Member

New singers have joined the choir, and I asked Travis Bregier to write a few words about himself. Travis sings bass and currently sits in the back row closest to Griffin Street.

Before moving to Santa Fe, I lived in Fargo, North Dakota, where the winters are long and your daily workout comes from shoveling snow.

Originally I was born in Bozeman, Montana. I didn't stay there very long as my family moved from Montana

to South Dakota ending up in North Dakota.

I have been drawn to choral singing from a very young age when I was brought to church by my parents. I always told them that I wanted to be in the choir because they sounded so good.

As far as my musical background goes I was very active in music in high school with band, jazz band, jazz ensemble, choir, madrigals,

and musicals. I then went on to college to earn a Bachelors of Music and a Masters of Music in Vocal Performance.

When it comes to other interests my family enjoys camping. It gives us a chance to get away and relax.

I am starting up a voice studio in the church. All ages a skill levels are welcome to join. While I specialize in voice lessons I can also teach music theory, ear training, and sight reading.

Ode to Linda

On Sunday, December 11, the congregation honored our Director of Music Linda Raney with a tribute during both services on the 30th anniversary of her service here at First Presbyterian. She was given a gift of a large Nambé platter and the establishment of a Linda Raney Discretionary Music Fund to be used for whatever she deems appropriate for the music program at FPCSF. At the conclusion of the MorningSong service, a reception with cake and flowers gave individual friends the opportunity to speak with her. On January 13, following the TGIF choir concert, presenting Linda Beck's Requiem, the Chancel and Bell choirs gathered at Dan Crane's lovely home for dinner and stories. Linda was given a personal gift from the choirs, and all attending guests sang the song printed at right, created by Jenny Harland based on comments given by the choir members. From the words, you will, perhaps, find yourself humming along to the tune of Beethoven's *Ode to Joy*.

Poinsettias and Lilies

Thank you for providing so many lovely poinsettias on Christmas Eve. The Chancel was filled with beautiful white, pink and red blooms. On Sunday, after the Christmas service, many of them were taken by the deacons to the shut-ins from our church. If you have not yet paid for the plants you ordered, please remember to make your check out to First Presbyterian with "poinsettias" written on the subject line.

Easter lilies will be ready for ordering at the beginning of Lent. We will have the dedication information ready to appear in the bulletin on Easter Morning when the flowers first appear in the sanctuary. Watch for the signup sheets on the table in the lobby and as bulletin inserts leading up to Easter.

Thanks to

- Bruce and Mary Black for their work in finding the usher teams for the Christmas Eve and Christmas service during James Smock's absence. The ushers appreciated your clear and concise written directions. Thank you to all the ushers who served during the Advent season!
- And the planning committee for Linda Raney's celebration: Chris Haynes, David Beatty, Nancy Maret, Jim and Pauline Toevs; for Krista's skill and detailed eye for getting the "secret" messages out to the congregation without alerting Linda to the surprise. Lelah also helped by making the reception ready before the 8:30 service had ended

*Joyful Joyful, our dear Linda
Leads our Music Ministry
With her natural grace and spirit
Blessing our community
So we gather here together
Choir, bells, church family
Giving thanks to God for this past
Five and quarter century.*

*Joyful Joyful, our dear Linda
From the Hoosier state appeared
Youthful energy and talent
All hearts quickly were endeared
Who would guess the legacy
In '86 that did commence
Our entire city's music
Glory bound from that time hence.*

*Joyful Joyful, our dear Linda
Patiently does all skills call
To make music whether pro's
Or cannot read a note at all
Challenging and having faith
That "all shall be well" we hear her say
Even when a train is wrecking
Or like sheep we go astray.*

*Joyful Joyful, our dear Linda
Sometimes zany, makes us laugh
Conquering the miscellany
For-gi-ving our actions daft
Turning pages at the organ:
Oops we just threw them on the floor
Playing B-flat music with a
C trumpet sounds awfully poor.*

*Joyful Joyful, Linda Raney
Joyful you have made us all
Four head pastors, countless staff
And thousands in the pews applaud
Thank you for your gifts of music
Shepherding us through joy and strife
Leading us towards great Communion
With the Heart and Soul of Life.*

From the *Presbyterian Women*



A belated Happy New Year! Presbyterian Women (PW) is on its way for another gratifying year.

We send a fond thank you to all who participated in our **Alternative Christmas Market** in December.

The proceeds from each nonprofit group contributed greatly to their prospective mission. Also, all those who stopped by the PW Food Table enjoyed a taste or two of sweetness from the great selection of goodies. Thanks so much to our lovely lady bakers who out did themselves this year.

The churchwide **Thank Offering** last November 2016 also revealed your generosity to mission.

Presbyterian Men's Breakfast

The Presbyterian Men's Breakfast is open to all to attend; it is prepared by the men chefs. The program for Saturday, February 11, for PMB will be given by Stewart Anderson, a recent member of FPCSF who works as a physician in the emergency room. The March 11 program will be led by Bill Adrian and will catch us up on recent developments on parking and other building maintenance issues for

Our **Bible Study** focusing on *Who is Jesus; What a Difference a Lens Makes* is both engaging and thoughtful. All are welcome to stop by the third floor to join us on any third Friday of the month. The spring schedule is as follows:

- February 17
- March 17
- April 21

I hope many of you were able to hear/meet with Carol Winkler, the national **PW Churchwide Moderator** who visited us as part of the 150th celebrations weekend.

For information about PW at FPCSF, contact Jean Ball (471.3628) or Helen Sutton (992.1964).

the church. We ask a \$2 contribution from members and encourage you to bring friends for free. Please contact John Whitcomb at travel@theway2go.com to help us get a head count or sign up for the February or March dates on the sheet in the lobby. We will also have programs April 8 and May 13, the second Saturdays of the month.

In Memoriam

From Bill Lavonis, life partner of Kurt Ollmann: "On behalf of the Ollmann brothers, Kurt, Scott and Mark, I am writing to inform your church community that **Janet Spencer Ollmann** passed away on January 17 after a brief hospital stay in Phoenix, where she recently relocated. She and her deceased husband, Ed, loved their church in Santa Fe."

A memorial service for Janet will be held at the church in the upcoming months. The church office has a cell phone number for Kurt Ollmann for anyone wishing to be in touch with the family.

Nancy Jean Ruoff, a longtime Santa Fe resident, passed away on Wednesday, January 25. Nancy was born June 5, 1940 in Albuquerque to Robert and Jean Ruoff. She was a graduate of Albuquerque High School and the University of New Mexico and earned a master of library science degree at the University of Kentucky. Nancy worked for many years at the State of New Mexico library. She was a member of the First Presbyterian Church in Santa Fe and volunteered in the church's library. Her hobbies included reading and genealogy. She was a resident at Brookdale Santa Fe Assisted Living Center. Nancy is survived by her brother, George A. Ruoff of Albuquerque; two nieces, Kathryn Faguy of Flagstaff, Arizona, and Christine Andrews of Amarillo, Texas; great nieces Kaitlyn Dougherty, Frances Faguy, and Helen Faguy; and great nephew Kyle Dougherty. A memorial service will take place at the church in February.

We miss you!

All Church Retreat on February 18

*Yet, O Lord, you are our Father;
We are the clay, you are the potter;
We are all the work of your hand*

– Isaiah 64:8

Please plan to attend the Annual All Church Retreat on Saturday morning, February 18, from 8:00AM until 12:30PM. Coffee and light breakfast provided. The Retreat will be led this year by Jane Knight who is a spiritual director and a potter.

This *I Am the Clay* contemplative retreat will meet in Pope Hall and will include the various aspects of working with clay and how that relates to our spiritual lives. Participants will experience hands-on work with hand molding and shaping the clay. Although participants do not work on the potter's wheel, Jane will bring her wheel to demonstrate the metaphor of "I Am the Clay." The Retreat will close with a communion service in McFarland Chapel.

Although Jane Knight was a Christian before she was a potter, she says it was not her spiritual roots that drew her to the potter's wheel, but the movie *Ghost!* (This connection will be explained at the Retreat.) God does work in mysterious ways!

What began as a pottery lesson on Magazine Street in New Orleans for Jane and a friend became a time of grace for the two of them and their instructor—a time and space to come unadorned, to play in the water and mud, and to open themselves to one another in sharing the stories of their lives. Jane's experience at the wheel gradually opened her eyes to see God as the Creator at work in each of us and how we are invited into partnership with God in creating.

About Jane Knight: Jane is a member of Aldersgate United Methodist Church (UMC) in Slidell, Louisiana, where she is active on the Care Team, United Methodist Cursillo, and the Labyrinth Ministry. Jane also has a Master of Social Work and is a

Licensed Certified Social Worker, a certified spiritual director and has received training in Clinical Pastoral Education. Jane is married to Bubba (Ralph) Knight, and they have two grown children and six grandchildren. Jane is also the sister of Mary Jo Lundy.

MSJ says

Volunteer Here

There are numerous opportunities in Santa Fe for meaningful volunteer opportunities. For the **Interfaith Community Shelter** for the homeless, volunteers are needed for evening hours at the shelter. These positions may need training. Call Sue Carr at the Shelter for more info at 795.7494. Nancy Peterson chairs our shelter volunteer action.

Creation Care Committee: This group is responsible for our commitments and activities as stewards of God's creation. We have qualified for the last two years to be one of the over 200 Earth Care Congregations of the PC(USA). To earn this distinction a congregation is evaluated on Worship, Education, Facilities and Outreach on an annual basis by the Environmental Ministries Office of the national church. In addition, the Session is required to sign the Earth Care Pledge. You may have seen the framed certificates in the hallway across from the bulletin board.

The Creation Care Committee, chaired by Mary Ann Lundy, invites all who are interested to sign up for the following areas: climate change, family lifestyle issues, water

issues, and education and advocacy. Rather than spend much of our time in meetings, we seek to educate ourselves individually about a topic and action that makes a difference.

The **Rooftop Garden** is one of our most rewarding activities, as is the **Community Farm** begun by the Stephenson family, members of this congregation. You may have noticed the **Earth Care Tidbits** in the Sunday bulletin that remind us each week of an aspect of Creation Care. Malissa Haslam is ecology awareness editor for those.

In the spring we will hold three Sunday morning education discussions. Watch for Earth Care celebrations in April, as we join with a national commitment to care for the earth.

To join the **Mission and Social Justice Committee** contact Mary Ann Lundy at lunwil1@q.com or Judy Crawford at judyjoancrawford@gmail.com. The Mission and Social Justice Committee, which meets monthly on the first Wednesday from 5:00–6:00PM on the third floor, will begin a study of the Belhar Confession in February.

Mission and Social Justice

Miracle Workers *by Gerald Heggen*

I have fond memories of Food for Santa Fe dating from the spring of 1987. The name has now been changed to Feeding Santa Fe. The goals and guidelines remain unchanged. The program grew out of First Presbyterian Church. Women of the church wanted to serve people in need. Homemade sandwiches appeared once a week to be distributed to all who stood in line at the church.

I must share a story as told by one of the most dedicated sandwich makers. A couple who were non-members were in the church offices seeking to arrange their wedding. They were requesting a certain time and were told that the time was not available because of the sandwich program.

They explained they first met two years ago while in that sandwich line. They stated, "First Presbyterian Church brought us together when we were homeless—we are no longer homeless and ready to be married in your church." The wedding took place at the time requested.

The sandwich distribution continued until it became too big for our downtown location. A study was made in an effort to find another way to serve. We found many who were in need of food supplements but could not receive them because they did not quite qualify (or they did not choose to qualify) as welfare recipients. We intended to make a bag of food available for pick up by these people each week—no questions asked.

Rudy Johnson was making this happen. He was making a plea for six volunteers willing to drive their own vehicles to the Albuquerque food bank and return with food for distribution. I volunteered. I did not consider the fact that my station wagon was a bit underpowered and had spent most of its lifetime at a much lower altitude. Each time I approached La Bajada Hill with a load of food, I hoped a miracle would get me to the crest. I made it—very slowly.

We had no building to use—the church's downtown location was not suitable—we were underfunded. The Santa Fe Catholic Diocese together with First Presbyterian Church had land on Alarid Street where a homeless shelter (now St. Elizabeth) was to be built. Perhaps we could distribute there and hope for a miracle to get us inside before winter. So—Food for Santa Fe was born in the great outdoors. Another program called "Share" was being formed. Not realizing the number of hours I would be working Food for Santa Fe, I volunteered to work Share too. It also was born outdoors—in St. Vincent DePaul's parking lots.

During Food for Santa Fe's early days, we often spent every nickel on the Food Depot's warehouse fees and hoped for a miracle to get us through to the following week. The director of Roadrunners, Jim Gallegos, became our best friend and advocate making certain we got more than our share of 'freebies'. A 'freeby' was food nearing its expiration date and which did not warrant warehousing. Local markets



More Miracle Workers: A group from the church helps Adelante provide meals to homeless families one Wednesday each month at Sweeney Elementary School. They prepared and handed out the Christmas bags at the church due to a rally at City Hall.

were also beginning to help us acquire food. Miracles were happening.

As winter neared, we needed to move indoors. Erik Mason, together with the good people of St. John the Baptist parish were working on our need. St. John had a long-established program which served lunch to the homeless. They agreed to stretch their facilities to include our program. Leftover food was to go to St. John's kitchen. Some weeks I had only a single bag of potatoes for their kitchen.

As we continued to grow, we needed more storage space but there were budget restrictions. Another miracle happened as we moved into a large self-storage locker. The rent was paid by a local motorcycle club.

A great ecumenical spirit evolved as we worked in the same space at St. John the Baptist's kitchen. Some of the women of First Presbyterian volunteered to work in their kitchen. People from Beth Shalom did the lunch on Christmas and Easter. St. Elizabeth shelter was built as a sharing project.

I continued to make the Albuquerque run every week until the local Food Depot was built. Most of those years, I hauled eggs from the egg farm. It was important that I arrive just before distribution. With weather, changing road conditions, and rush hour accidents, this required planning plus a few miracles. Construction of the 'Big I' went on for a very long time. I had to keep up to date on lane closures and detours. One miracle I appreciated was performed by my friend at the egg farm warehouse. Manuel had my order on the dock every time I arrived—regardless of how many semi-trucks were lined up.

My wife and I planned to do a Volunteer In Mission for a hospital in India for three months in 1994. The egg run had to be done without

Mission 101

Mission Work in Dangerous Times

by Judy Crawford

As I learn more about our mission co-workers throughout the world I am impressed with their strong commitment and courage. They are often on the front lines of the most dangerous areas of our world.

Many years ago I read an inspiring comment by co-workers in Pakistan after the school they worked in was attacked by terrorists. Their guards were killed, and they personally were in grave danger. Yet they did not request home leave or a change in their assignments, but instead said, "We continue to understand that the safest place for all is in the center of God's will."

In January of 2015, 45 churches were burned by radical Islamists, but the Evangelical Church in the Republic of Niger, a Presbyterian World Mission partner church, accompanied by three mission co-workers, continued its commitment to build bridges to the majority Muslim population. Michael and Rachel Ludwig, mission co-workers write, "Christians went from being victims to offering forgiveness."

There are regions in the world where mission co-workers serve with such high security concerns that they are encouraged to only use their first names and no information can be posted about them on their websites. This is for their safety and for the safety of the people with whom they work.

As you read each week in the church bulletin about a particular mission co-worker please pray for their safety and health.

interruption. I found a driver willing to drive my van while I was gone.

The Los Alamos fire which destroyed 450 homes demanded an immediate response. Our program and the Food Depot were able to extend our normal programs to include aid for Los Alamos. Some of our church members appeared to handle the extra work.

We went beyond supplying bags for the people coming through our line. Deliveries were made to senior centers and to the homes of some disabled and shut-ins. Villa Consuelo Senior Center had 60 residents without cars. I delivered those 60

bags. We also delivered to Esther Gonzales Senior Center. One of the home delivery routes was done by Leo Pando. When Leo was no longer able to deliver those 12 bags, I agreed to take over. I enjoyed performing one very small miracle. One of the recipients was not very mobile. Mr. Tapia would find his bag of food not only delivered but stowed away in his kitchen.

Miracles, big and small, continue to happen, The gap between cultures has narrowed. That ecumenical spirit has expanded to the point of all faiths sharing in operation of the Interfaith Homeless Shelter.

History of Our Buildings: *Our First Church in 1867*

On January 15, 1867, one week after First Presbyterian Church was formally organized, the first pastor, Rev. David McFarland, and the elders determined to take immediate measures to “secure the ruins of the Baptist Chapel that it may be repaired if possible” to be used for worship services and as a school. After its second roof collapse, in 1866, the Baptists had abandoned their adobe church building.

In March 1867, Rev. McFarland purchased—out of his own pocket—the old adobe church along with 2 acres of adjoining land. Although now on a smaller parcel of land, this is still our location as we celebrate our 150-year anniversary. McFarland also purchased a house that became the parsonage. He was later reimbursed by the Presbyterian Board of Missions.

Rev. McFarland and his wife Amanda made arduous journeys back east to raise money for the new church and school. Serious repairs began in 1868, and by 1869, the church had bare whitewashed walls, a roof supported by six square unpainted wood pillars, two wood stoves whose pipes sent smoke out through the roof, a melodeon (organ) at the back, and light provided by candles, kerosene being too expensive. Competing with each other for ventilation, the stoves often smoked, and smoldering wood was carried out through the smoke-filled room just before services. The pulpit was an unpainted wooden desk on a low platform. The room was cheerful enough on a warm

bright morning, but in the evening the candles barely gave enough light to see.

By 1874, according to the new pastor, Rev. George Smith, Santa Fe was populated by 6,000 Mexicans and 200 to 300 Americans, and “Catholicism and ungodliness reign.” At one point the military had to protect citizens from overzealous Catholic priests who tried to prevent them from attending the Presbyterian church. Living in Santa Fe was expensive. “Everything is from fifty to one hundred percent higher than in New York,” Smith reported to the Board of Missions.

In 1876, a report from the church’s Board of Trustees to the Board of Missions stated frankly, “The church building which we occupy is the property of the Board of Missions, and would be a valuable shelter for horses.” Later that year the church walls and roof were renovated. The parsonage was rebuilt, adding a study, parlor and bedroom. Stables and fences were built, and the streets on either side of the lot were straightened.

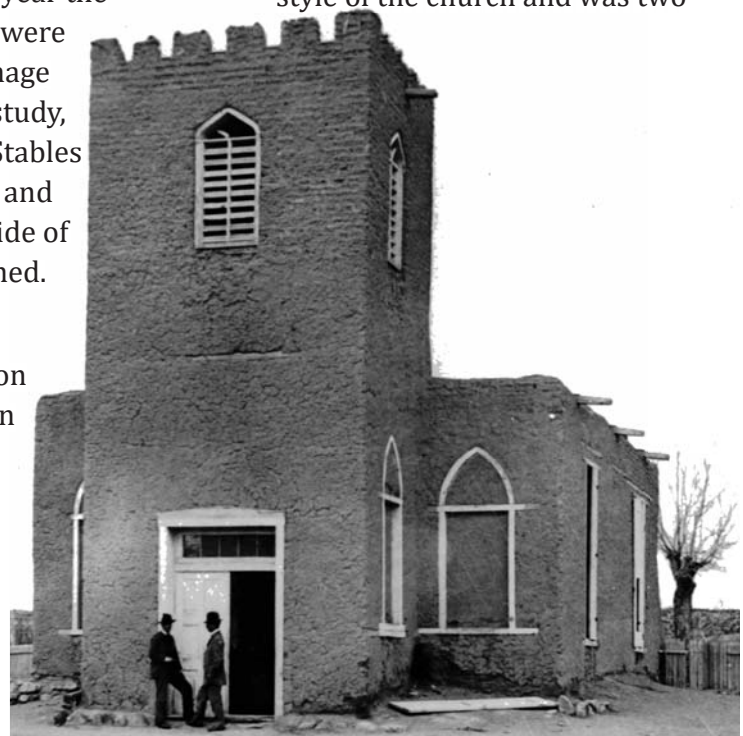
The renovated church served the congregation until its replacement in 1882.

A New Brick C

In 1880, church officials began plans to build a new church north of the old one. Originally, the new church was to be built of wood, but parishioners opted for a brick structure in the Gothic Revival style. In July 1882 the new church was dedicated, the furniture moved over from the old church, and the old adobe church demolished.

The new church, which was 40 by 50 feet, had stone footings and stem walls, windows probably of colored glass, a roof probably covered with small metal sheets with soldered joints, and a vaulted ceiling of pine. Many sketches of the church depict it with a tall conical steeple, but the steeple was never built.

In 1889, the church built a new brick manse northwest of the church. The new structure was built in the same Victorian Gothic style of the church and was two



In 1867 missionary minister Rev. David McFarland purchased this abandoned adobe church from the American Baptist Home Missionary Society for \$300. The building was repaired and the first Presbyterian worship service here was held on December 15, 1867.

Church in 1882, Then a Manse

and a half stories high with a one-story porch on its west side.

Improvements to the structures continued during the 1890s. In addition, the pastor also built a woodshed, planted a garden, piped water into the house, and built a privy—since no outhouse existed—and a cesspool.

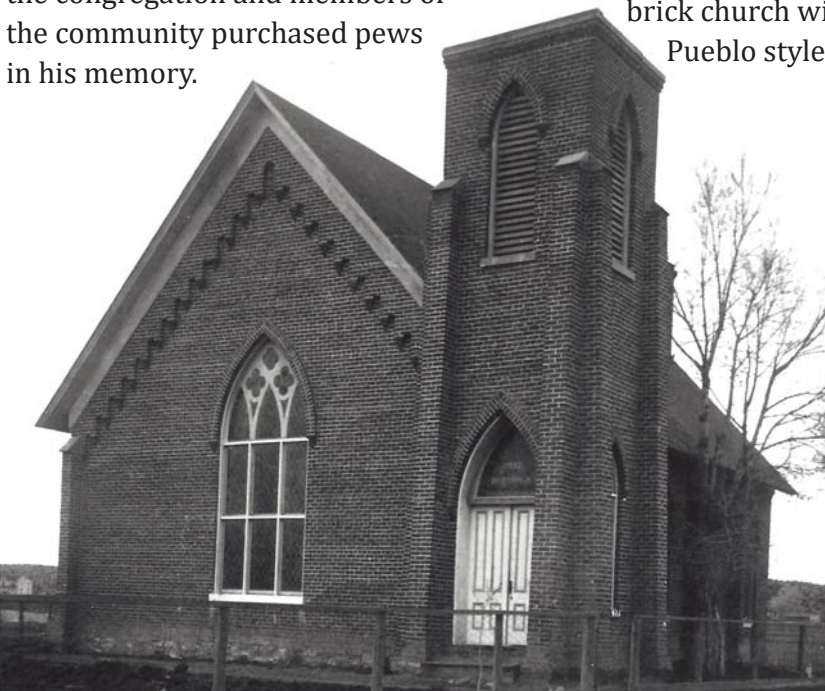
The front yard of the manse had a large plot of grass with a snowball bush in the center, a large mulberry tree, and a lilac bush by the front fence. A wooden bridge spanned the acequia between the manse and church. Apple trees lined the acequia, which ran with water most of the time.

Under the leadership of the Rev. W. Hayes Moore, the church became self-supporting in 1902. Rev. Moore had wanted to replace the squeaky metal folding chairs with pews, but funds were not available. After his death in 1904, the congregation and members of the community purchased pews in his memory.

The church building was expanded in 1906. It needed space for the Sabbath School as well as a new 13-stop Hook and Hastings pipe organ. The church caught fire in 1907 and sustained considerable damage, although the new pipe organ escaped the fire. The organ was electrified in 1921 after one Sunday when the janitor went to sleep, to the detriment of his pumping chores.

In 1928, the brick manse was remodeled to serve as the children's church school, and a new manse was built in the northeast portion of the lot along Grant Avenue. In 1936-37 an addition was built onto the church school—the former manse—and named Pope Hall in honor of Judge William Hayes Pope. The new structure provided much needed meeting and classroom space.

At the same time discussions were under way to replace the aging brick church with a new Pueblo style church.



In 1881 a new red brick church was built in Gothic style behind the old adobe church under the leadership of Rev. Johnson M. McGaughey. The adobe church was then torn down. This first service in the new church was held on May 21, 1882. This church served Santa Fe for 57 years.

Where We Worshipped

- Palace of the Governors, 1866–1868
- Adobe Church, 1868–1882
- Brick Church, 1882–1939
- Pueblo –Spanish Revival Sanctuary, 1939–present, in addition to:
 - Original Pope Hall, 1970–1998 (Contemporary Worship)
 - Chapel, 1962–2004 (weddings, memorial services, contemporary worship)
 - Rosario Chapel (Rosario Cemetery), 2004–2006 (during renovation of current building)
 - Rooftop Garden, 2006–present (Morning Song in summer)
 - Current Pope Hall, 2014–present (Morning Song)
 - Ghost Ranch, Abiquiu (annual summer outing)
 - Aspen Vista (Worship in the Woods–Contemporary Worship)
 - Los Golondrinas

Where Our Pastors Lived

- House north of the Adobe Church, 1867–1890
- Brick Manse, 1890–1928
- “New” Manse, 1928–1955
- Own homes, 1956–present

Where We Gathered

- Palace of the Governors, 1867
- Adobe Church, 1867–1882
- Brick Church, 1882–1939
- Addition to Brick Church for children's Sabbath School, 1906–1938
- Brick Manse remodeled for Sunday School, then Pastor's Office, Library, Choir Room, 1928–2004
- Pope Hall attached to Brick Manse, 1936–2004
- Hart Hall attached to Pope Hall, 1948–2004
- Education building that replaced “New” Manse, 1962–2004
- Education and Administration building, 2006–present

History of Our Buildings: *Santa Fe Style Sanctuary in 1939*

In 1939, a new Pueblo-Spanish Revival sanctuary, the one we use today, was built on the same site as the old brick church. The sanctuary was designed by John Gaw Meem, a famous Santa Fe-based architect, known for advocating the preservation of Pueblo and Spanish architectural styles but using modern materials and ideas. In Meem's agreement with the church - fearing financial constraints might tempt the church to cut corners - he stipulated that no changes to his plans would be permitted without his approval.

The sanctuary was built by contractor Fred Grill, a well-known Santa Fe builder and colorful character with speech of the "mule-driver variety". During construction, covering the cost of the ceiling beams and corbels became a problem. After learning that a group of Mexican woodcarvers who would do the work for a modest sum was in jail, Grill and Rev. Tozer arranged with the police to bring the carvers to the job daily under police escort.

The sanctuary was built in six months, with a partial in-kind adjustment on the architect's bill and a reported loss by contractor Grill, who said he wanted to do something to square his account in "the last roundup".

Not all the furnishings were completed with the building, and the old pews from the brick church were still in use. After it was known that Mrs. J. Ashby Davis wanted to make a gift of new pews as a memorial

to her deceased husband, a church committee selected the design, and in 1943 the pews were installed and are still in use today.

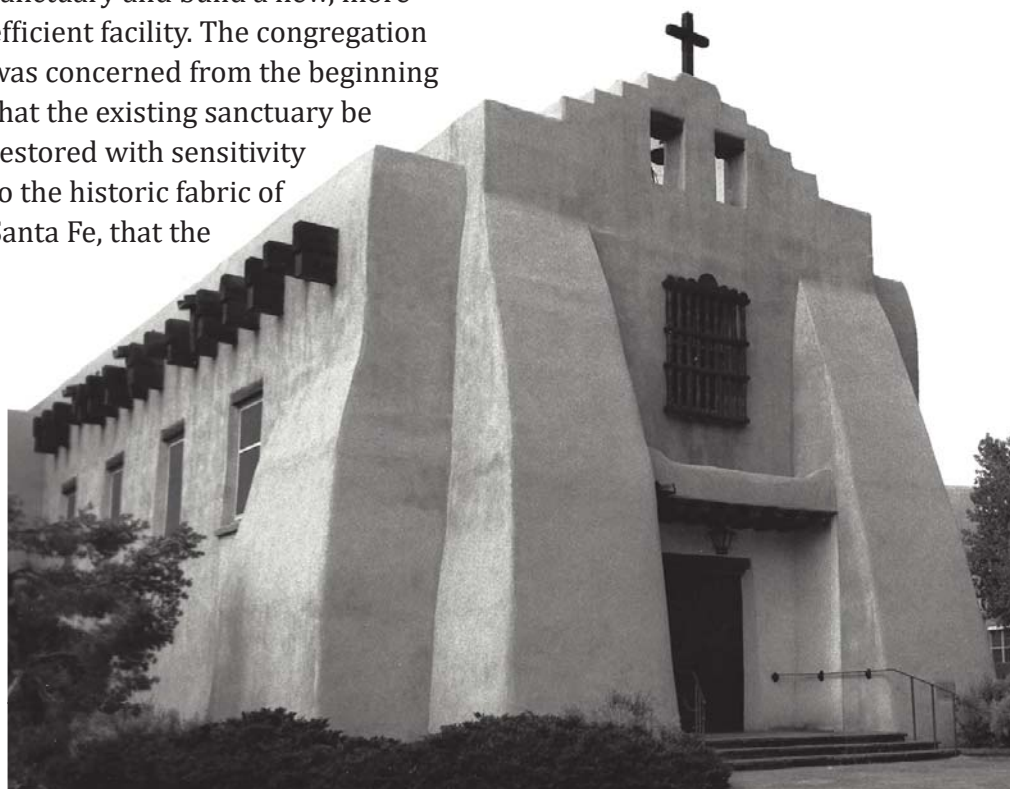
During the 1940s and 1950s, as the church was growing, new structures were added in the Pueblo style and connected to the sanctuary. In 1945, the church had paid off its loans and was debt free. In 1955, the manse was vacated for reuse as a Sunday school. This building was then demolished in 1960, replaced in 1961 by a new education building with a partial basement and new chapel. More remodeling was done in the 1970s and a major refurbishing in the 1980s.

In the early 2000s, the congregation made a commitment to remain a downtown church and made plans to raze all the buildings except the sanctuary and build a new, more efficient facility. The congregation was concerned from the beginning that the existing sanctuary be restored with sensitivity to the historic fabric of Santa Fe, that the

new building be environmentally responsible, and that the new facility be available to the people of Santa Fe both as a community meeting space and as a center for mission.

After two years, the new three-story building was dedicated in 2006 and the mortgage fully paid in 2007. The new C. B. Fisk Organ was installed in the spring of 2008, completing the nearly \$7 million building project which was funded in full by contributions.

Today as the building ages, projections show that it will need expensive repairs and renovations over the coming years. Once again, the congregation is stepping up to support the structure that houses its worship, its preschool, and the many missions it performs on behalf of the community.



A new sanctuary, designed by local noted architect John Gaw Meem, was completed in 1939 under the leadership of Rev. A. G. Tozer, minister from 1936-1939. The sanctuary, renovated in 1983-84 and 2004-2006, has become a Santa Fe landmark and served Santa Fe for 78 years.

Church as Mission

The Great Heritage—Bold Future Campaign

from the 150th Celebration Capital Campaign

“Then I heard the voice of the Lord saying, ‘Whom shall I send, and who will go for us?’ And I said, ‘Here I am, send me!’ ”

– Isaiah 6:8

The GREAT HERITAGE— BOLD FUTURE Campaign

First Presbyterian Church began in 1867 as a mission church to meet the needs of a growing city and region. Since its founding it has been instrumental in creating and shaping many social services that support the well-being of citizens in our community. The building addition that was completed ten years ago as well as the renovated sanctuary and the new organ have given First Presbyterian wonderful tools for fulfillment of its mission today. These facilities serve the needs of the congregation for worship, study, fellowship and service to others.

As part of the celebration of our 150th anniversary, the Session approved a capital stewardship program with the objective of providing critical capital for the next ten years. The three purposes of our proposed campaign are: Stewardship of our Facilities; Parking; and Support of two specific Mission Initiatives. These purposes are fundamental to the fulfillment of our divinely-given mission.

Building Maintenance as Mission

Our *Book of Order* reminds us that our church facility is one major way we engage the community and its

maintenance is part of our Mission. Visibly located in the heart of the city our Church is a spiritual center, a community center, and a cultural center. We are entrusted with an historic sanctuary of very significant value not only to us, but also to the city of Santa Fe.

More than 150 organizations have used our facilities over the past six years. There is an urgent need to replenish our building maintenance reserves in order to fulfill our mission and be responsible stewards of our resources.

Parking as Mission

Our parking situation is critical given the loss of the present space behind the church due to construction of the new county facility. Accessibility to parking has been identified by the vast majority of our congregation as an essential priority. Accessible parking demonstrates our commitment to being an open, hospitable community of faith. Church growth analysts insist that easily accessible parking is imperative to maintain and grow our congregation.

Mission Initiatives

Mission to others is woven into our organizational DNA and has always been at the forefront of this congregation’s identity. Many of the early mission projects are serving the area to this day and continue to be supported by our church. As a celebration of this rich heritage

we propose to expand our mission commitments both within our church family and beyond our walls in order to address current community needs.

1. Raise additional scholarship funds for our Child Development Center to provide low-income families access to our preschool.
2. Mission within the community—Adelante: FPC currently supports, both financially and through volunteer hours, a local organization called Adelante which serves children, youth and families experiencing homelessness. Adelante’s in-school liaison currently works one-on-one with students in Santa Fe High School to identify barriers to academic success. Our campaign will assist by funding the salary of an additional liaison, doubling the number of students served through this life transforming demonstration of Christian outreach.

This is a summary of a more detailed Case Statement you will receive early in the new year. The campaign committee is currently engaged in staffing teams from the congregation that will insure a successful campaign.

When you are invited to participate, remember the quote from Isaiah 6:8: “Then I heard the voice of the Lord saying, ‘Whom shall I send and who will go for us?’ And I said, ‘Here I am, send me!’ ”

Children and Youth

Youth Ministry Makes a Difference

Perhaps you have noticed the presence of teens and tweens on the third floor, in worship, and participating in the ministries of FPCSF. What you are seeing is Youth Ministry Alive, connecting and growing and making a difference in the life of the church.

Last September when a group of six young people and two advisors began to gather on Sunday mornings for Bible study, ideas for congregational participation and outreach quickly became a part of the discussion along with talk about fellowship, fundraising, and youth room redecorating. In November the group, which calls itself the “Youth Connection,” enthusiastically assumed responsibility for the Angel Giving Tree, energetically making angels, keeping lists, and wrapping gifts for the Homeless Teen Shelter and the Alice King Center.

After the Giving Angels were placed on the tree teens hung greenery in the sanctuary and halls in preparation for Christmas. They then helped host Las Posadas, greeting and serving posole and cider to guests.

Next came plans for Christmas Eve. The youth made and placed 144 farolitos, served as liturgists, and participated in the pageant at early worship. The real challenge was keeping the farolitos lit in the Santa Fe wind. A special thanks to Drew for trying!

January 8 was a very special day in the life of the church as Milan Brkić, Sadie Hill and Brian Ortiz joined the membership of FPCSF. Look for special things from these three newest members, and from other youth who will have the opportunity to begin confirmation classes in 2017.

On Friday, January 13, the Youth Connection held their first fundraiser, selling home baked goodies to TGIF concert guests. Funds raised will be used for fellowships and outings, youth room additions, and mission and outreach, along with a special donation to be made back to the church.

A “paint the youth room party” is scheduled for February 11 followed by an open house TBA. This will give everyone the opportunity to see how creative our teens are as well as to support the youth ministry.

Please continue to pray for our growing group as they connect with each other, encounter the living God, and impact the world in word and deed. Youth ministry indeed does make a difference!

News You Can Use

Maria Romero has now assumed all **FPC Business Office** functions. Members of the congregation should contact her with questions on the following:

- Pledges
- Contributions
- Statements
- Expense reimbursement requests

Maria is in the business office on the third floor on Monday mornings and Wednesday afternoons and she can be reached at any time by e-mail (businessoffice@fpcsantafe.org) or by cell phone (505.603.1303).

Sign up for Nixle: <http://www.nixle.com>. Former church member Andrew Phelps, when he was the Emergency Manager in Santa Fe, recommended this service to us. It is a Community Information Service that helps you stay connected to your local police department and local community agencies and organizations. Information like traffic accidents and missing persons is immediately available by text message, by email, and over the web.

Dear church members from **Reba Allen**: I miss all of you and especially Linda and the choir. I'm now getting situated in my new home in Washington, Indiana, where I have lots of family. (Comes in handy with the packing and getting settled.) I am forever grateful for the prayers and concerns (especially from the choir) throughout my surgery and cancer situation. I love you all.

Say a **Fond Farewell to Karen Finney** on Sunday, February 12, between services. She is moving to Atlanta to be closer to family. We appreciate her service on the Mission and Social Justice Committee and as an Elder!

Calling All Languages! We are blessed at First Church to have a number of speakers of other languages that contribute to our World Communion Sunday services. To date we have prayed the Lord's Prayer in Bulu, Elsaessich, French, German, Greek, Hebrew, Malay, Portuguese, Quenya, Russian, Spanish, and Vietnamese. Do you have a working knowledge of a language that has not been represented in past years? If yes, please contact Jenny Harland at harlandjn@gmail.com.

Fireside Chats with the Mystics has resumed on Tuesdays from 5:00–6:00PM in the Rendon Room. The wisdom of Catherine of Siena guides our meditation and conversation as we start the New Year. Newcomers are always welcome and neither advance preparation nor weekly participation is required. Rev. Linda C. Loving provides leadership when she is available; members of the group pick up leadership when she is not.

The **University of Notre Dame Glee Club**, directed by Daniel Stowe, will present a concert of sacred and secular music on Wednesday, March 15, at 7:30PM. The performance will take place at the Cathedral Basilica, 231 Cathedral Place. The 70-voice all-male chorus celebrated their Centennial season in 2014–15 as one of the nation's most renowned university choral ensembles. The concert program will feature a cappella classical music for men's chorus, as well as sea shanties, folk songs, African-American spirituals, barbershop melodies, and, of course, the famous *Notre Dame Victory March*. Goodwill donations will be accepted at the performance, in lieu of admission tickets.

Teatime for Peace, Wednesday, February 22, 5:30 to 7:15PM in the Sanctuary and Pope Hall: First Presbyterian is working with Santa Fe's Interfaith Leadership Alliance to host Santa Fe's first Teatime for Peace. Modeled after a similar program originating in Cleveland, Ohio, Teatime for Peace seeks to bring all faiths—believers and non believers—and all traditions, languages, cultures and orientations together for a Celtic Evensong justice and peace service, and one-on-one, supper-table dialogue. Its goal is to foster a better understanding among people of different faiths and divergent views by replacing myths with real people, and misunderstanding with conversation. Make plans to attend. All are invited to share, listen, learn, and to celebrate our diversity and humanity.

The Santa Fe New Mexican featured an article on the **English Language Learners** program. You can still view the article online by searching Westminster Presbyterian on the New Mexican website santafenewmexican.com.

Save Sunday, April 30, at 1:30PM as Brian D. McLaren will be speaking about **The Great Spiritual Migration** at the First Presbyterian Church of Albuquerque, 215 Locust St NE. Brian is the author of several bestsellers, including *Why did Jesus, Moses, the Buddha, and Mohammed Cross the Road?*, *We Make the Road by Walking*, and *Naked Spirituality*. A former college English teacher and pastor, he is a passionate advocate for "a new kind of Christianity"—just, generous, and working with people of all faiths for the common good.

New Member Bios

Mary Ann Amos

Brian Ortiz

With a longstanding family history in First Presbyterian Church, Santa Fe, Brian has grown up in the church and holds FPCSF central to his life.

Brian actively participates in FPCSF's The Youth Connection, has a quick smile and is always eager to help despite the task. "One of my life's aspirations is to be happy with whatever comes my way," he said.

It's that kind of positive outlook that helped Brian achieve a Kenpo 5.0 martial arts black belt at the children's level while in elementary school, and a second-degree brown belt at the adult level. "I plan to be a black belt in two years," he confidently said.



David and Mary Ann moved to Santa Fe from Leawood, Kansas, a Kansas City suburb, after David's retirement in 2008 to enjoy Santa Fe's weather, history, diversity, culture and the green and red chilies. A native of Parsons, Kan., Mary Ann is a long-time Presbyterian having served as an elder in a Kansas City Presbyterian church.

Though retired, Mary Ann had a long and successful career first earning a PhD in microbiology, and teaching virology and immunology to second year medical students, and then owning and managing a medical-legal consulting firm. She loves hiking and snowshoeing, traveling, and reading and quilting.

Mary Ann and David have been married for nearly 49 years. They have three children, a son-in-law, two daughters-in-law, and a step-granddaughter in graduate school. They are expecting a granddaughter in April.

Asked about FPCSF, Mary responded, "We feel at home with the friendly and like-minded people we've met."

Donna & Jay Ralph

Jay and Donna Ralph are Midwesterners. Jay was born and raised in Milwaukee, Wis., and Donna in Tuscola, Illinois. They met and married at Fourth Presbyterian Church in Chicago in the 80's before beginning their international life, first in Bermuda, then Zurich, Switzerland and Munich, Germany. Jay worked in Finance and Reinsurance, retiring at the end of 2016 from Allianz. Donna managed the home and children in each of the countries, working on the side



as a Children's Choir Director and accompanist. They both love hiking, skiing, opera and travel, and look forward to participating in their new community.

Welcome, new members!

Sara (Sadie) Hill

Sara Hill, whose friends call her Sadie, was born in Santa Fe, and has been attending First Presbyterian since she was 9-months old because, as she said, "My mom joined the church because she needed a place to be grateful about me."

After high school graduation, Sadie aspires to study cosmetology at Vogue College and economics at Santa Fe Community College. She eventually wants to own a beauty salon in Santa Fe so she can be near family, friends and First Presbyterian Church.

"First Presbyterian has been a second home to me. I love this church. I want to be married here, have my kids attend preschool as I did and be part of this church for the rest of my life," she said.

Children are an important part of Sadie's life. She loves taking care of kids. "I love babysitting and surrounding myself with little kids," she said. "I think it's my hobby. It's the best!"

Facilities Committee

We need your help with several items regarding parking in 2017.

The past few months there have been reports of vehicles being parked in private parking spaces around the church, as well as vehicles in the county parking lot during their business hours. Our agreement with the County with respect to use of the lot directly behind the church is informal and only for when they allow the public to park after hours in the evening and on weekends.

Our neighbors have been assured that church members and guests will be advised to not park on private property, nor during county business hours and the church supports any actions regarding these vehicles; tickets, fines, tire boots, towing, etc.

The archeological work in the county's parking lot, announced at the public meeting in November has begun, and there will be impact on what will be available to the public to use after hours. Please observe any signage or barricades established if you chose to park there.

Currently we still have access to use the parking lot at the Ghost Ranch property.

The city is reviewing a resolution to change some of the parking enforcement regulations. Everyone is encouraged to review it and give input to your city councilor. It could have a very positive impact on addressing the church's parking needs.

We also have been getting reports of "hit and run" damage to vehicles in the church garage. If you cause damage to a vehicle, please leave a note for the owner. If you observe someone causing damage to a vehicle, please let church staff know so the owner can be informed.

Parking your vehicle in the garage is at your own risk, the church does not assume any responsibility for damage done by another vehicle.

Thank you,
Bill Adrian, Facilities Manager



Do You Know What This Is?

asks the Facilities Committee.

It is the tool we should use to lock and unlock the partitions in Pope Hall. When the partitions are locked in place we should not be forcing them in either direction. They must be unlocked first. The partitions will soon be repaired and the Facilities Committee would like to train as many congregation members as possible on the use of this tool to set up and take down partitions. Please contact Bill Adrian (facilities@fpcsantafe.org) or Jenny Vellinga (vellinga77@me.com) to set up your training session. We are hoping to have lots of people learn this useful skill.



*Missing?
Prefer not to be listed?
Contact the church office.*

February

- 1 Lynn Babcock
- 2 Elizabeth Hook
- 3 Dorothy Karayanis
- 4 Robb Thomson
- 7 Gwen Fuller
Lu Santa Cruz
- 8 Jackie Rose
Jim Rose
- 9 Carol Fallis
- 12 Malissa Haslam
Marjorie Lunderville
- 13 Janis Gonzales
- 15 Mary Ann Amos
- 17 Ralph Williams
- 20 Bill Gee
Carol McKee
- 22 Lisa Vernon
- 24 Penney Poole
Raymond Raney
- 25 Rie Clark
- 27 Linda Sue King
Evelyn Perea (CDC)

March

- 2 Pat Roach
Lucy VanDenzen
Daniel Van Essen
- 3 Mike Mansfield
- 4 Alexander Barrera-Shumaker
Howard Turner
- 5 Jay Ralph
- 7 Jenny Harland
- 8 Harry Eberts
- 10 Luke Moran
- 11 Mark Bixby
Jeremy Henry
Michael Woods
- 12 Barbara Roush
J.Q. Whitcomb
- 13 Gerald Heggen
- 14 Jennifer Mallory
- 15 Laurel Seth
- 16 Peggy Zone
- 20 Helen Foster
- 24 Krista Peterson
- 25 Wyatt Moran
John Pasch
- 26 Bobb Barnes
Drew Hill
- 27 Sarah Smith
- 28 Dawn Wink
- 29 Andrew Black
Glennis Hinshaw
- 30 Jeanine Martin

April

- 2 Art Hansen
Chuck Poitras
- 4 Heneida Rojas (CDC)
- 5 Jane Alexander
Cindy Piatt
- 6 Liza Doyle
- 7 Jim Babcock
Eleanor Stevens
- 8 Grace Anderson
- 10 Bo Brumble
- 12 Amparo Wulf
- 13 Sheila Gumerman
- 14 Alex Chastenet
Ed Maglisceau
Margo Wulf
- 19 Dennis Sanderson
- 20 Jane Gee
- 22 Anne Noss
- 24 Sid Barteau
- 25 Nick Wolff
- 27 Pat Luiken
Kathy Van Essen

Lending Library

Alice Tinkle has taken over the job of keeping the lending library in the lobby under control. She wishes to thank Gail Pasch for tending to this for several years.

A suggestion to make the library work well would be for you to bring a current good book, fiction or nonfiction, which you think others

in the church might enjoy reading. This is not the place to bring a pile of books from your library that are of no further interest to you. The public library or any of the charity shops in town might be better for those.

Meanwhile, browse through the many books that we have collected. There are some fine ones. When

finished, you may bring them back to our library, or pass them on to your friends; anything to keep them circulating. Please do not re-shelve books you return, though, as Alice does have a system of organization.

Highlights

from Session

Session usually meets on the third Wednesday of the month at 6:30PM. Below are the highlights from the last three months:

- Session approved hiring an intern to assist Krista through the holidays using funds from the Pastor's support fund
- Session approved Worship and Music request that in the future one-service-only worship will consistently meet at 10:00AM
- Youth Group met with Session and presented their ideas for outreach and mission activities as well as décor of the Youth Room on the third floor
- Session approved a CDCAC Fundraiser
- Session approved a MSJ request that FPC endorse the City of Santa Fe Resolution regarding Santa Fe's Sanctuary Policy
- Session approved a MSJ request to host a "Refugees Speak" forum on January 8
- Session approved a final Case Statement for the capital campaign
- Session approved establishment of an endowment fund, to be called the Karen Lake Buttrey Child Development Endowment Fund, for CDC Scholarships
- Session approved the Finance Committee 2017 budget

Deacons

The new 2017 Deacon's class is continuing to support some very popular and beneficial programs for the congregation and the community. The Deacons had their first "Soup Day" of the year on January 29.

Monthly **Blood Pressure Checks** will be provided for all members and visitors on the third Sunday of the month from 9:30-10:30 in the Church Office/Library. These checks are provided for the well-being of the congregation and community either to keep track of a known problem or to check that there is no problem with this "silent killer." Blood Pressure Checks for church members will be conducted by people who are qualified to conduct blood pressure checks. A couple of doctors who are retired, several retired nurses and one doctor and nurse not retired are all willing to volunteer their time to check your blood pressure.

As in the past, we will pass out our **Bienvenidos Bags** on the third Sunday and pick up the food bags on the fourth Sunday. These bags provide a welcome food resource for those who struggle with providing food for their family.

We will continue to make hospital and in-home visits where they are needed. Please contact any Deacon to request a visit.

Gathering for Sunday Lunch with church members, long time, new members, friends and family

When: Fourth Sunday of the Month

Time: 12:20PM

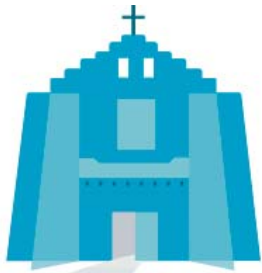
Location: TBD

Note: we have been enjoying lunch at the Santa Fe Bar & Grill, a private room but the challenge is parking

Contact Church Staff and Volunteers

Name	Extension	E-mail	Schedule
Rev. Dr. Harry Eberts III, <i>Pastor</i>	x11	harry@	Mondays off
Linda Raney, <i>Director of Music</i>	x16	lraney@	Mondays off
Jill McCormick, <i>Children & Youth</i>	505.699.5093	children-youth@	Sunday mornings
Anne Liley, <i>CDC Director</i>	x20	preschool@	Monday-Friday
Krista Peterson, <i>Office Manager</i>	x10	office@	Monday-Friday
Bill Adrian, <i>Facilities Manager</i>	505.501.3453	facilities@	Tuesday-Saturday
Judi Haines, <i>Clerk of Session</i>	x15	clerk@	Tuesdays, Wednesdays
Gale Wright, <i>Treasurer</i>	703.795.1520	treasurer@	Wednesdays
Betty Kersting, <i>Membership</i>	x15	membership@	Fridays
Maria Romero, <i>Contract Bookkeeper</i>	505.603.1303	businessoffice@	Monday AM, Wednesday PM
Archives	x27	archives@	Thursdays

Main number is 505.982.8544 and e-mail addresses are all @fpcsantafe.org.



FIRST PRESBYTERIAN CHURCH
of Santa Fe

Behold. Be still. Become.

208 Grant Avenue
Santa Fe, NM 87501

La Epístola *Winter 2017*

Adult Education

9:45–10:45AM Sundays

Roundhouse Issues

The 60-day session has begun at the Roundhouse and many crucial issues are being discussed and debated that will affect our lives as New Mexicans. Join us each week in Pope Hall to learn more about these issues from our legislators:

February 5 Sen. Gerald Ortiz y Pino

February 19 Rep. Linda Trujillo

February 12 Rep. Matthew McQueen

February 26 Sen. Bill O'Neill

Living the Questions

We all have questions with which we live and wonder about. The adult study which has begun again in the McFarland Chapel, on Sunday, January 22, will probe some of the questions you may have about faith and life and/or raise questions you never thought about. In any case, each class will be stimulating and instructional—no pat answers but open-minded and thoughtful. Presentations by some of today's leading religious voices will be shown. Some of the topics in the seven-week series will include prayer, social justice, compassion and mystery.