



Pledge Dedication Sunday Is November 18

2019 and Beyond Campaign Combines National Fund for Sacred Places Challenge Grant with 2019 Stewardship



Each fall, we set aside a special time for prayerful consideration of what our church means to us, to our community—even to the world—and how we can grow our diverse ministries and missions to change lives. To support our engagements and the open, welcoming doors of our church, our commitment to be good stewards of God’s blessings is essential.

It’s with our focus on that responsibility to God that guides our 2019 and Beyond Campaign, which combines our short-term, annual Stewardship request with the facilities portion of our longer-term Great Heritage—Bold Future capital campaign.

Our annual Stewardship Campaign seeks financial support to our ongoing ministries, local missions and operations in 2019. This year our budget requests approximate \$525,000.

To further bolster our Great Heritage—Bold Future Campaign, we reached outside the church, and were among 17 churches nationwide selected to receive a challenge grant from The National Fund for Sacred Places.

The National Fund Challenge Grant could provide a maximum grant up to \$250,000 but would require a \$500,000 match, and a commitment from us to complete National Fund-approved repairs to our Sanctuary within a specified time. So far more than \$300,000 has been pledged.

This is a special time to share our enthusiasm for our successes thus far. It’s our hope that you will seek God’s guidance, acquire the facts you need and designate as generous a contribution to these objectives as your circumstances allow. Any amount, no matter how modest, will help us build on our forebears’ dreams and bring God’s light to each other and the community.

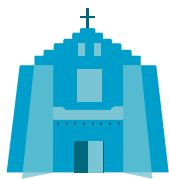
More detailed information regarding the National Fund Grant Challenge is available in a Q & A at the information center in the church’s lobby, or you can contact Plato Karayanis (505-424-8174), or Diane Buchanan (469-371-3186) and Rick Andrew (214-755-2698), who also lead our Stewardship drive.

Upcoming Events

Moments in Gratitude By members of our church family: Beginning Oct. 14.

Pledge Dedication Sunday Celebration ice cream social between services and at noon: Nov. 18

Kick-off Sunday Fellowship brunch between services and luncheon at noon: Nov. 4



FIRST PRESBYTERIAN CHURCH
of Santa Fe Behold. Be still. Become.

Pastor

Rev. Dr. Harry Eberts III

Session

Bruce Black
Bill Eklund
Sharon Eklund
Janis Gonzales
Judi Haines
Alan Hook
Steve Kinnett
Richard Lindahl
Gayle Lomax
Jim Martin
Brian Ortiz
Dennis Sanderson
Gale Wright

Deacons

Leo/Donna Krulitz
Drew Hill
Laurie Wisdom
Lisa Barrera
Susan Clark
Jenny Warden
Alvin Baca
Carolyn Stupin
Andy Wulf
Gay Hill
Rosie Mott
Tom Mott
Darryl Bowman
Arlene Jackson
Adrienne Ewing-Meyer
Keith Kirby
Sharon Kirby
Karin Lerew
M'Lea Walsh
Djohariah Toor

Communications Committee Chair

Keith Kirby

Newsletter Coordinator

Rebecca Heindel

Jane Stringfellow Installed as Presbytery Moderator

Congratulations to **Jane Stringfellow** (right) who was installed as Moderator (2019) of the Presbytery of Santa Fe, at the Annual Meeting of the Presbytery at Ghost Ranch on October 21. **Bryan Beck**, past Moderator (2018) and **Seth Finch**, Moderator-elect (2019) joined her. Presbytery of Santa Fe, which covers Northern New Mexico, celebrates its 150th Anniversary in October. Jane will chair presbytery meetings, and will oversee the ordinations and installations of ministers.



PARKING OPTIONS for SUNDAYS

(It's not as bad as you think!)

First Presbyterian's Garage: 18 places are in the garage for our physically challenged, or to drop off riders before parking elsewhere.

Parking meters: 114 street meters are in our vicinity, and they are free on Sunday.

Santa Fe Convention Center Garage: The entrance Ramp is on Federal Street across from Main Post Office. Attendant will give you a time-stamped ticket. Bring ticket to Lelah at our Welcome Desk in the lobby. She will give you a small blue sticker to attach to your ticket. This is for three hours max! When you leave the parking garage, give the ticket with sticker to attendant. The church will be billed. If you want to help defray these costs, simply drop a bill in the donation box by Welcome Desk.

There are elevators from the Convention Center Garage. They are 100 yards from Church. So you may want to drop off your passengers closer to church, before entering parking garage.

Carlos Gilbert Elementary School: 40 Free places available in the school bus drop-off loop. Drop off your passengers first, unless they do not mind a walk of 100 yards.

First Alley to your right, off of Staab Street coming from Griffin Street: seven spaces, tightly parked.

Please do NOT park in the small lot belonging to Santa Fe Chamber Music Festival. They are good neighbors, and we want to keep it that way.

Our Facilities Manager has prepared a tri-fold poster that explains other parking options. It is in the lobby.



Dear Theophilus,

Rev. Dr. Harry Eberts III

The Presbytery of Santa Fe held a celebration dinner October 18 to honor its 150th anniversary. The large fellowship hall of the First Presbyterian Church in Albuquerque was packed, the atmosphere was lively, and the presentations were upbeat. Here are my takeaways after hearing about 150 years of Presbyterians in Northern New Mexico.

Our church started it all. We were first. The vision for healthcare, education, building churches and growing followers of Christ sprang from this small triangle on the corner of Grant and Griffin—with tremendous guidance from amazing people and from other places in the country. A need is identified, people step up, solutions are put forth, actions are taken, some work, some don't, and ministry goes on.

This church survived like no other, and has thrived longer than all the others. A former executive presbyter recounted the decades since 1867 and lifted up the churches established in each decade. Many are still around, but to my surprise, many more are not. I only hear the narrative that churches are closing these days but churches were closing in those days as well. At our own 150th Anniversary in January 2017 the Co-Moderator of the PC (USA) told us that churches often

have a life span of 50 years. We have tripled that! And we're still going.

Before I get too far ahead of myself, I also recall the words last night from the Presbytery's youngest pastor who serves the Presbyterian Church in Taos. Her first words were the "Church is dying." This is not new to me, or probably you as well, but I've been fretting over this for most of my 34 years of ministry. We've been in a dying cycle since the 1960s at least, and it has caused tremendous anxiety and has affected almost everything we do.

But this same pastor continued: If it means we are dying to power, prestige, and privilege than bring it on. This dying can mean the rising of faithfulness. I say, yes it can!

I see a rising of faithfulness in this church, and it's not slowing down. I marvel at the ministries, new and old, that spring up to address a need. I see people like you who step up with your gifts and talents and energy and time. I see it in our Great Heritage—Bold Future Campaign, and most recently in the National Fund for Sacred Places Challenge Grant, which will help us remain a central and vital part of this community for years to come. I see it in our yearly Stewardship Campaign that ensures our ministry continues to thrive year by year. I see it in the yearning to follow the ways of Jesus Christ in this place and time, to be an alternative community and outlook to what we might be experiencing in society around us.

There is indeed much to celebrate as we soon approach our 152nd year. We won't hold a celebration dinner for this anniversary but I do hope we remember to rejoice for the faithfulness this congregation has exhibited through these many years. And, with God's help, we will keep rising.

Many blessings – Harry

Music for the Soul

Chancel Bells Fall Rehearsal Wednesdays

Chancel Bells had their first Wednesday rehearsal on September 5 and will continue to rehearse every Wednesday until Christmas Day. They will begin again January 8, 2019. Concerts are December 20 and April 12.

In addition to Sunday anthems, this season we will be singing:

Nov 4: Durufle's Requiem

Dec 23: Poulenc's Gloria

Jan 11: Durufle's Requiem

April 19: Cherubini's Requiem

May 31: Hadyn's Teresa Mass



TGIF 10th Anniversary Season

July 27, 2018—July 26, 2019

TGIF's 10th Anniversary Season was inaugurated on July 27 with organist Larry Palmer. Join in the celebration of TGIF's 10th Anniversary by attending these upcoming concerts.

November

16 Black Mesa Brass Ensemble

23 David Solem, piano, and Linda Loving, narrator – L'Histoire de Babar le petit éléphant, Poulenc

30 Saxophone Quartet

December

7 High Desert Harp Ensemble

14 eSSO

21 Chancel Bell Choir of First Presbyterian Church

28 Jan Worden-Lackey, organ

January 2019

4 Michael Ging, organ

11 Chancel Choir of First Presbyterian Church – Requiem, Durufle

18 Piano Trio: Julanna Gilbert, Alan Eckert and Robert Coombe

25 Grisha Krivchenia, piano

Third Sunday After Church Lunch

After a trial in May we decided that the Café Sonder on Guadalupe Street would suit our needs for an after church lunch fellowship each Third Sunday of the Month unless there would be a conflict. We have recently had successful gatherings in Sept. and Oct. We have continued to appreciate: the varied menu of very tasty food, speedy service, accommodation of our indefinite numbers, separate checks handled promptly and adequate parking in the rear. The staff is very friendly and helpful. Do think about joining us anytime. Bring a friend or even invite a visitor that morning.

The next Third Sunday lunch at Café Sonder will take place on November 18 after the 11:00am service. Reservations aren't necessary but if you plan to come or have questions please sign our notice in the lobby.



Musical Happenings

All Saints Day Commemoration

Sunday, November 4. The names of people who have died this past year will be read, and the Chancel Choir will sing the Requiem by Maurice Duruflé.

Duruflé began composing this masterpiece in 1936 and completed it in 1948. It is based on several Gregorian Chants and has a meditative quality that is unique to the repertory.

Soloists for our performance include Barbara Roush, Nina Brown, Tim Wilson and Nancy Maret. David Solem will accompany on the organ.

The Requiem will be sung in its entirety on Friday, January 11 at 5:30pm for TGIF.

First Presbyterian Christmas Caroling

Sunday, December 2 from 1pm-4. We begin at Casa Real at 1:00, Santa Fe Cares at 1:45 and then carol for various Second Family participants of the church in their front yards. It is a fun afternoon, so mark your calendars.

For Lessons and Carols

Sunday, December 23, the Chancel Choir will sing "Gloria" by Francis Poulenc. Commissioned by the Koussevitsky Foundation in honor of Sergei Koussevitzky, long-time music director of the Boston Symphony and his wife Natalia, the composition was premiered by the Boston Symphony in 1961.

Using the traditional Gloria text, the piece is divided into six sections for chorus and soprano soloist. Nancy Maret will sing the solo parts. The choir will be accompanied by David Solem on the piano.

This piece will be part of our Lessons and Carols Service, and the congregation will be treated to Christmas readings and the singing of favorite Christmas Carols.

Three Opportunities to hear the Chancel Bell Choir

On Wednesday, **December 19 at 5:30pm** the Chancel Bell Choir will present a concert of Christmas Bell Music at the Rivera Chapel on Rodeo

Road. Don't miss this chance to hear the bells and experience this gorgeous worship space. A TGIF Christmas Favorite, the bells will repeat the concert on Friday, December 21 at 5:30pm at FPC and will play at the 5:00pm service on Christmas Eve.

Christmas Eve at 5:00

Carols, candle lighting, an impromptu Christmas Pageant for Children and the Chancel Bell Choir. This rollicking family service combines the both fun and traditional in a shorter family-friendly service perfect for all ages.

Christmas Eve at 8:00

Traditional service carols, candle lighting, Christmas Story and Music for the Chancel Choir, Harp and Trumpets. Welcoming the Christ Child, worshippers will reflect on both the exuberance and the quiet of the special night.

Come to *Santa Fe* for the **Fisk Festival @ First**
10th anniversary of the C.B. Fisk, Opus 133
Oct. 19 - Nov. 10, 2018

 **Janette Fishell**
concert—Fri., Oct. 19, 5:30pm
master class—Sat. morning, Oct. 20

 **Scott Montgomery**
concert—Fri., Oct. 26, 5:30pm
master class—Sat. morning, Oct. 27

 **Kimberly Marshall**
concert—Fri., Nov. 2, 5:30pm
master class—Sat. morning, Nov. 3

 **Nathan Laube**
concert—Fri., Nov. 9, 5:30pm
master class—Sat. morning, Nov. 10

First Presbyterian Church, Santa Fe, NM
fpcsantafe.org/fiskatfirst/
Master classes co-sponsored by
The Albuquerque Chapter of the American Guild of Organists

We are Better Together.

FPC members have recently shared the importance of our church in their lives. Our 2019 and Beyond campaign calls on each of us to be good stewards of God's blessing and to consider the benefit a gracious heart means to the good work of FPC. We are one in Christ.



2019 and Beyond

"You have no idea how much it strengthens and lifts our daughter, Carolyn, to know that people in Santa Fe are thinking of her during a really challenging time in her life. Carolyn was deeply touched by a prayer shawl from this church, which she has on the foot of her hospital bed as we speak. We are so grateful for this church and its strong presence in our lives."

– Rick Andrew/Diane Buchanan

"We want to contribute to the Challenge Grant. First Presbyterian is a beautiful church that should be kept up, has beautiful, caring people in its walls and a big heart for those in need outside as well as inside the church. Keep up the good work!"

– Donna & Leo Krulitz, who recently moved to Virginia

"It's scary to think about pulling ourselves out of our comfort zone, it always is. But I know this, when I've taken a risk for God and stretched what I thought I could do, or what I could give, my faith has grown stronger. Risk equals reward and for that I am grateful."

– Sharon Kirby

"Focusing on my own needs confines me to self. Giving opens me to the needs and fellowship of others. My world is broader and richer by giving."

– Jay and Donna Ralph

"Giving to First Presbyterian Church has been in actuality a gift for me, as I feel so grateful for the opportunity to support the church's work in my own life as well as in our community. As our church performs its many missions, including providing high-quality care for pre-K children, supporting the many homeless children in Santa Fe, feeding the homeless at the shelter, surrounding us with beautiful music daily, opening our doors to all, and working and giving in so many meaningful ways, I am thankful for the richness in faith and friends that participation has brought me and thankful that I am able to give to continue FPC's good works in our community."

– Sharon Eklund



Spiritual Pathways –Acts II

Fall Semester 2018 – September 16-December 16, 2018

The Book of Acts is the story of what God is up to through the early followers of Christ. Acts II is our story, today, in this place as we seek to become new apostles of Jesus Christ.

This fall we look to God to find our way forward in a messy and increasingly complicated world. We will be guided by *Faithful Resistance: Gospel Visions for the Church in a time of Empire*, a book by Rick Ufford-Chase, former moderator of the PC (USA).

Classes will normally be in Pope Hall on Sundays, 9:45am-10:45. Here's the schedule for the balance of the year.

Copies of Faithful Resistance are available in the church office for \$10.

November 4	Resisting the Seduction of Silence
November 11	The Local Congregation as the Locus of Resistance
November 18	Theological Education as an Act of Subversion
November 25	Mission as a Move to the Margins
December 2	Alternative Gift Market (no class)
December 9	Institutional Church as an Expression of Solidarity
December 16	Dismantling the Corporate Church as a Step Toward Liberation



Weekly Meditation Group

Fireside Chats with the Mystics has just started a new focus: Mother Theresa's wisdom and faithfulness is now guiding our spiritual growth and meditation time. We gather every Tuesday 5pm-6pm in the Rendon Room, and newcomers are always most welcome! No book or preparation is needed – just come with an eagerness to connect with the Holy through soulful conversation, silence, and reflections on selected

passages from the mystics who have preceded us on the journey. This group has gathered for 2-½ years now. Some folks come weekly; some, more occasionally. Each gathering can “stand on its own.” For more information, or for the code to enter the building, contact group convener Linda Loving at lclev@aol.com.

Journaling as a Spiritual Practice

The Acts II Spiritual Formation offers a monthly spiritual journal writing class. Newcomers to the class are welcomed, whether just interested in the subject or with seasoned journal-keeping experience. Each session, members of the class may share some of what they have written, followed by a short lesson on the topic for the month. The final hour of the class is spent in actual writing on our own. Come join us and see if this is what you have been looking for in deepening your spiritual journey. The class, taught by Jeannie Bowman, is based on Christina Baldwin's book *Life's Companion*. Having the book is not a requirement. Please bring a journal and writing instrument with you to class. **Journaling as a Spiritual Practice meets the last Friday of each month at 11:30am in Pope Hall.**

Spiritual Companions at Ghost Ranch

Two spiritual directors of our congregation, Rev. Christine Vogel and Jeannie Bowman, served as the Ghost Ranch Spiritual Companion for Tuesdays and Wednesdays throughout the months of July and August. During the day, each served as leader for worship, labyrinth and peace walk meditations, and spiritual direction when requested.

Being on the Ranch was a rewarding and deeply spiritual experience. Providing companionship for those who came across their paths, those who sat with them at the meal tables, and those who wrestled with questions for the day was a deeply rewarding experience.

Christine and Jeannie continue to occasionally serve as worship leaders for both Sunday morning worship and workshops at Ghost Ranch. Such a privilege and opportunity!

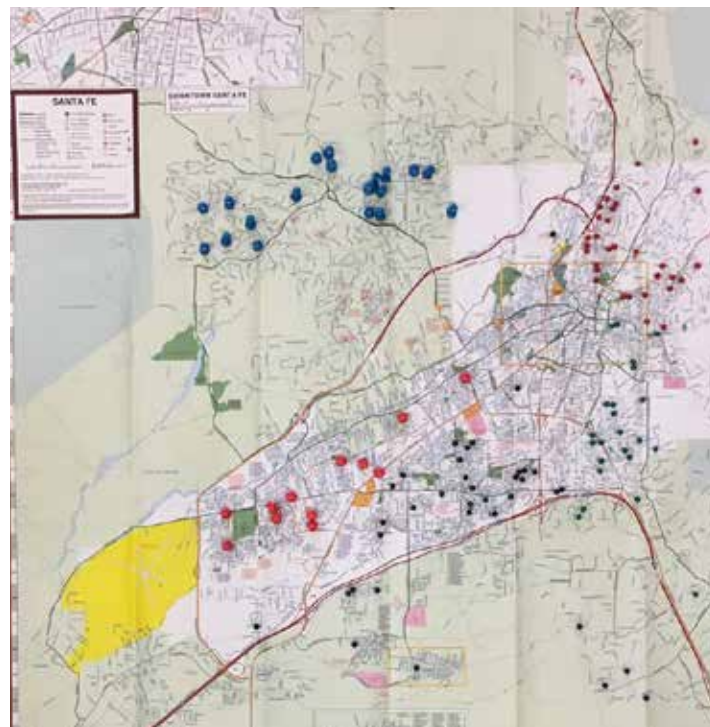
A Ministry in the Making

Neighborhood Groups

It began with Mary Black seeing a need and creating a "pin map" identifying eight geographic congregational groups. Mary's concept of neighborhood church communities grew as she and Betty Kersting worked together, noting folks who had moved, where new members live, and who in our congregation might appreciate an occasional meal or a phone call, or being part of a dinner group or Bible study. Sharon Kirby took the map and the vision to the Board of Deacons and the "Deacons Neighborhood Ministry" was born.

We now have four neighborhoods ready to launch. Expect a call from a Deacon in your neighborhood. Look forward to the opportunity to meet new church members. Think about how this might work best for you and your neighbors.

The pin map will be on display soon. Take a look, see who your church neighbors are, and get excited about what's yet to come.





Birthdays

November

- 1 René Harris
- 1 Samantha Sloan
- 2 JR Martinez
- 3 Bill Jackson
- 4 Diane Buchanan
- 6 Jane Stringfellow
- 7 Julia Hudson
- 10 Milan Brkic
- 10 Noé Villarreal
- 11 Jim Moore
- 11 Iris Pecorelli
- 12 Judy Crawford
- 12 Robert Watson
- 13 Brian Ortiz
- 15 Anne Liley
- 16 Jennifer Elliott
- 16 David Mason
- 17 Linda Tsosie
- 18 Caroline Doyle
- 19 Barry Lyerly
- 19 Eliza Schaum
- 20 Ann Rowe
- 21 Jeannie Bowman
- 21 Travis Bregier
- 22 Esther Milnes
- 26 Janis Chitwood
- 26 Andrew Wilder
- 27 Holly Bacon
- 28 Robert Buchser

December

- 1 Sara Romer
- 2 Tom Paalman
- 2 Roger Prucino
- 2 Doug Sieck
- 2 Martha Wood
- 5 David Amos
- 10 Mary Larson
- 11 Sarah Miller
- 13 Djohariah Toor
- 13 M'Lea Walsh
- 14 Leslie Calabrese
- 15 Jacob Allen
- 15 Sharon Eklund
- 15 Andy Smith
- 15 Bernie van der Hoeven
- 16 Mari Cornejo
- 16 Jean Withers
- 17 Juanita Thorne-Connerty
- 18 Lisbeth Cort
- 18 Rebecca Hodges
- 18 John Ruybalid
- 19 Mayzie Sultan
- 23 Richard Crawford
- 23 Mary Ann Lundy
- 24 Margaret Lyerly
- 24 Jenny Vellinga
- 25 Andy Morello
- 26 Roger Copple
- 26 Plato Karayanis
- 27 Lesly Carr
- 27 Mary Wright
- 28 Amy Gross
- 29 Pam Najdowski
- 30 Susan Clark
- 30 Shirlee Davidson
- 32 Linda Beck
- 31 Mary Anne Fowlkes

January

- 2 Jordan Smith
- 2 Owen Van Essen
- 3 Al Hill
- 3 Harold Lerew
- 4 Richard Haber
- 4 Larry Haslam
- 4 Helen Sutton
- 5 Bill Amorous
- 7 David Stevens
- 9 Jim Finney
- 9 Betty Jones 01/09
- 10 Julianne Jones Sherman
- 12 Pauline Toevs
- 13 Nat Dean
- 16 Patricia Copple
- 17 Alan Hook
- 17 Savannah Schaum
- 21 Connie Austin
- 21 Ken Bateman
- 23 Robert Carr
- 24 Jan Worden-Lackey
- 25 Cora Bixby
- 25 Leah Paalman
- 27 Lorena Brkic
- 27 Laverta Moore
- 28 Franny Anderson
- 28 Barbara Gay
- 29 Bruce Rolstad
- 30 Barbara Strange
- 31 Tim Willson



What is the rhythm of our month of worship?

What is the song of our Sundays?

Let's get in the rhythm.
Each Sunday a new song:
a-one- and a-two-and
a-three-and a-four

First Sunday – Holy Communion, a new month lies ahead

Second Sunday – Meet and Greet those who want to join our church

Third Sunday – New Members are received and celebrated

Fourth Sunday – Circle Sunday to inquire, engage, discuss and learn about

MISSION– WISDOM –
JUBILEE – STEWARDSHIP
while breaking bread
in fellowship

What is a Columbarium?

And do you know one exists in the Church's Chapel?

The answer is: A Columbarium is a permanent structure made of spaces where family members can place urns containing the ashes of their cremated loved ones. Columbarium is derived from a Latin word that means, "dwelling place of a dove." What a lovely way to think of your family members sharing a space in the "dwelling place of a dove" near the heart of the church.

One member's daughter wrote: "My Mother will be resting inside the Church. It makes me feel safe; knowing she's inside; knowing she is safe, nestled within the Church. She will be in a place where I can go during any kind of weather. She will be inside, cared for and remembered by the Church always. Her being there just makes sense to me – seems the right thing to do."

Please plan to attend the Stewardship Circle on Sunday, February 24, 2019, when the Columbarium committee will speak and be prepared to answer any questions. Meantime, call Bill Adrian 505-501-3453, or Rebecca Heindel, at the Church Office 505-982-8544, in you would like more information.

Interfaith Shelter – Thank you

To all who recently contributed food and workers at the Interfaith Shelter's winter evening program in October, a hearty "thank you." We were blessed to have young people and youth from FPC involved in this ministry as well. The guests really enjoyed relating to them. Thanks, again, to everyone, and our apologies if we missed anyone in the list below.

Mary Ann Lundy
Jane Hanna
Rebecca Heindel
Renate Matcham
Marjorie Lunderville
Mary Black
Bruce Black
Sheila Hartney
Nancy Peterson
Patricia Veech
Tom Mott
Jim Martin
Jean Eddy
Lelah Larson

Madeleine Wright
Sharon Eklund
M'Lea Walsh
Melissa Mitchell
Judy Crawford
Liz Hinds
Liz VenDenzen
Sean Buckley
Alice Tinkle
Dick Lindahl
Jordan Smith
Eleanor Smith
Niva Smith
Malissa Haslam

Jean Eddy
Jean Withers
Lynn Bickley
Louis Bair
Lily Bair
Bill Humphreys
Leah Mitchell
Christina Hill
Drew Hill
Sharon Kirby
George Packard
Elise Packard





Session Highlights

Submitted by Judi Haines, Clerk of Session

As you know Session was in recess the month of July, so the meeting in August was pretty busy and interesting. We read and discussed the statement from the General Assembly regarding Advocacy and Social Justice that dates from 1958 – but holds true even today. We inferred the “edit” from men to people.

“The General Assembly affirms its conviction that neither the Church as the body of Christ, nor Christians as individuals, can be neutral or indifferent toward evil in the world; affirms its responsibility to speak on social and moral issues for the encouragement and instruction of the Church and its members, seeking earnestly both to know the mind of Christ and to speak always in humility and love; reminds the churches that their duty is not only to encourage and train their members in daily obedience to God’s will, but corporately to reveal God’s grace in places of suffering and need, to resist the forces that tyrannize, and to support the forces that restore the dignity of all men (people) as the children of God, for only so is the gospel most fully proclaimed; . . .” (1958 Statement – PC(USA), p. 537).”

Session approved a joint motion from Facilities, Great Heritage—Bold Future Campaign and Finance committees regarding the National Fund for Sacred Places (NFSP) Grant Application to support a restoration project with an estimated total cost of \$860,000.

We approved combining the 2019 Stewardship Campaign and the NFSP Grant Challenge to be kicked off November 4. Commitment Sunday is November 18.

In September, Session approved the joint motion from Facilities and Finance to accept the proposal to change our outdated, antiquated phone system for a Vonage VOIP Phone System. Our thanks to C.C. Wright and Ryan Miller for the research. Installation will occur soon.

In October, we approved the preliminary 2019 budget to be presented on Stewardship Sunday (November 4) and reviewed the projected results for 2018.

We had a long interesting discussion about how we – not just the Session – but any congregant or interested party can become involved as an Advocate at the Round House in this next legislative session. More about that later.



The Presbyterian Men’s Breakfast hosts a monthly morning breakfast and forum for all members of the congregation, their guests and the public.

Visit fpcsantafe.org/education/mens-breakfast/ and press the Facebook link for more information on listed events.

WINGS
Group Art Exhibition

OPENING RECEPTION
Friday, November 2nd 6PM to 7:30PM

Exhibit Dates
October 28 to November 25, 2018
gallery is located inside the First Presbyterian Church

Viewing Hours
Friday 6PM-7:30PM
Saturday 10AM-2PM
Sunday 8AM-11AM

BACK PEW GALLERY

Presbyterian Women

NOVEMBER = Happy Thanksgiving

The Presbyterian Women's Church-wide THANK OFFERING will be celebrated at FPC on Sunday, November 18. Help us express our gratitude for God's blessings by sharing with those in need at home and around the world.

These offering funds programs that provide education, safe housing, clean water, health care, justice for women and so much more.

Sixteen projects will be funded this year, 12 are ministries in the USA serving people in need and four projects are international. Learn more about these missions on Sunday, November 18. Thank you for your continued support for this Presbyterian Women Thank Offering.

DECEMBER = Holiday Wishes and Merry Christmas

SAVE THIS DATE---SUNDAY, DECEMBER 2, 2018

The ALTERNATIVE CHRISTMAS MARKET at FPC from 9:00am-1:00pm in Pope Hall.

This church activity also helps support charitable/mission related groups. Shop for lovely gifts and/or honor someone with a donation to his/her favorite charity or mission project. All proceeds go to the specific charity/mission project involved.

A new winter scene spreads across our land once again. REJOICE and BE GLAD!

If you belong to a non-profit organization/group or mission project, or are an interested in participating, please contact Jean Ball and complete a form, available in the church lobby during the month of November.

Also, at this time, an "Early Alert" is being made to our super volunteer bakers to check for their delightful, delicious recipes to liven up our Presbyterian Women "food table"– a must stop on everyone's Alternative Christmas Market visit. Enjoy!

JANUARY 2019 = Happy New Year

HOPE is Everlasting—Enjoy life

The Presbyterian Women's Bible Study continues its monthly gatherings, October—June on the 2nd Wednesday at 10:00am in the Rendon Room.

This year's study is entitled God's Promise, I am with You. We hope you will consider stopping by one Wednesday to listen in/or participate in our discussions on how God relates to you in all circumstances. All are welcome.

NO NEW YEAR'S RESOLUTIONS REQUIRED

Blessings to YOU!



Youth Deacon Drew Hill (right) photographs Kathleen Banks' family after memorial services.



Thank you to Laurie Wisdom (l-r), Tom Mott, Keith Kirby, Alice Tinkle, Mary Black, Lisa Barrera and everyone who helped make Kathleen Banks' memorial service a blessing for the family.



Two-Month Overview

Note: Adelante is one of FPC's supported missions and a recipient of funding from our Great Heritage—Bold Future Campaign.

During the first two months of Academic Year 2017 - 2018, the Santa Fe Public Schools Adelante Program provided services to the following community members

- 459 families
- 986 children and youth
 - 142 younger siblings of students attending school in the district
 - 67 Pre-K Students
 - 763 students attending grades K-12 in the district
- 14 older siblings (who are earning their GEDs or college degrees) of students attending school in the district
- 74 percent of Adelante students live in doubled-up, overcrowded households, sharing space with multiple families
- 16 percent of Adelante students live with a relative (grandparent, sister, aunt, uncle, etc.) who is not their permanent, legal guardian
- 8 percent of Adelante students live in temporary housing, like a motel or shelter
- 1 percent of Adelante students live in substandard housing
- 1 percent of Adelante students are “couch-surfing” or living on the streets

Coats for Kids

As the cooler weather settles in, families are in need of coats. All sizes are being accepted for donation, from infant through adult. If you're able, please bring coats or gift cards to the SFPS Adelante offices (located at 1300 Camino Sierra Vista, Santa Fe, NM 87505), or make a donation online.

Thank you to all who have supported the Early Childhood Program at SFPS Adelante. The donations of educational toys, diapers, books, etc. are distributed each week. Your donations are making a difference in the lives of children and their families. Thank you to all the community members who have contributed, and a special thank you to the Presbyterian Church for their support.



Bernie and Farsijana Adeney-Risakotta, mission co-workers from Indonesia, shared their successes and work in bridging the gap between Christianity and Islam.



Luke Rembold (right), Youth and Young Adult Ministry Coordinator for the Presbytery of Santa Fe, presented his Young Adult Volunteers to FPC Adult Ed class during a discussion on young people in the church. The Young Adult Volunteer (YAV) program is an ecumenical, faith-based year of service in sites around the world and across the United States. YAV's accompany local agencies working to address root causes of poverty and reconciliation while exploring the meaning and motivation of their faith in community with peers and mentors.

Second Family

A birthday celebration for Harriett and Harris Barber was hosted by members of their Second Family at Dave and Mary Ann Amos' home.



Adiós

Farewell and best of luck to Janet and Charlie Spring who moved to Hingham, Mass. Your talents at the Welcome Desk, delivering an occasional sermon and work on the communications committee will be sorely missed. Enjoy your daughter, grandchildren and favorite seafood restaurant.



The Youth Connection Celebrating God's Love

The Youth Connection is enjoying quite a busy Fall Season! Here are just a few highlights to remind you of what great teens we have at FPC.

On Sunday mornings students have loved taking turns researching and leading weekly discussions on World Religions. Ask them which was their favorite! Now the group moves on to a study of C.S. Lewis' Chronicles of Narnia, beginning with "The Lion, the Witch and the Wardrobe."

We have begun a "girl's only after-school group" on Wednesdays, applying scripture and "What Would Jesus Do?" to everyday struggles and concerns. It is hoped that a similar group will form for the boys soon.

Several of the youth volunteered at Pete's Place on October 17. They are planning on more mission projects and will once again organize outreach activities for Christmas, including the much beloved "Angel Giving Tree."

A Presbytery Fall Youth Retreat is set for November 16 through 18 at Shepherd of the Valley Presbyterian Church in Albuquerque. The Youth look forward to this special time of growing closer to God and to reconnecting with some of their Ghost Ranch and Loma Verde friends.

Keep your eyes open for these vibrant teens around the church and in the pulpit. Ask them questions, give them a hug, and continue to show them how much you care.



Recipe for Youth Ministry



Take one spruced-up youth room



Add Bible study



And gratitude



Celebrate God's love

Mind the GAP

London's underground transit system is familiarly called the tube. This is where the warning to "mind the gap" first came into usage. You might say it to someone as they were boarding the tube, crossing the open space between the platform and the train.

We Yanks might say, "Watch your step."

Here at First Presbyterian Church, Santa Fe, we have our own GAP that needs minding. It is our youngsters between the ages of 9 and 11.

We have about six or seven of these "tween-agers" who are a bit too mature for Jill McCormick's little ones' activities. Yet, they are not quite mature enough to participate in Sharon Kirby and Bill Humphreys' Youth Connection, a robust group of teenagers who study the Bible, go to Ghost Ranch, and are planning a mission trip.

Ideally, two adults from our congregation will fill the GAP by getting to know our tween-agers, planning activities for Sunday mornings. Interested? Contact Rebecca Heindel at church office or frontdesk@fpcsantafe.org



LA EPÍSTOLA

WINTER 2018 :: VOL49, NO4

Contact Church Staff and Volunteers

Rev. Dr. Harry Eberts III,
Pastor, ext 11, [harry@](mailto:harry@fpcsantafe.org)

Rev. Andrew Black,
Parish Associate

Linda Raney, Director of
Music, ext 16, [lraney@](mailto:lraney@fpcsantafe.org)

Jill McCormick, Children
& Youth, 505-699-5093
[children-youth@](mailto:children-youth@fpcsantafe.org)

Anne Liley, CDC Director
ext 20, [preschool@](mailto:preschool@fpcsantafe.org)

Bill Adrian, Facilities
Manager, 505-501-3453,
[facilities@](mailto:facilities@fpcsantafe.org)

Judi Haines, Clerk of
Session and Membership,
ext 15, [clerk@](mailto:clerk@fpcsantafe.org)

Gale Wright, Treasurer
703.795.1520, [treasurer@](mailto:treasurer@fpcsantafe.org)

Maria Romero, Contract
Bookkeeper 505-603-1303,
[businessoffice@](mailto:businessoffice@fpcsantafe.org)

Archives, ext 27, [archives@](mailto:archives@fpcsantafe.org)

Main number is 505.982.8544 and e-mail addresses are all @fpcsantafe.org, url: fpcsantafe.org

First Presbyterian Church
208 Grant Avenue
Santa Fe, NM 87501